

SASKATCHEWAN'S INTEGRATED ENERGY COMPLEX

The Opportunity

Saskatchewan has emerged as an energy powerhouse with an abundance of light and medium oil, as well as large, untapped reserves of heavy crude oil and bitumen. Saskatchewan has an estimated 45.6 billion barrels of initial conventional oil-in-place, including an estimated 22.9 billion barrels of initial heavy oil-in-place in the west-central region of the province.

The Integrated Energy Complex is envisioned as a large industrial value-added, hydrocarbon-based processing and manufacturing energy cluster that, when fully completed, could include a world-scale heavy oil/bitumen refinery that will meet Canada's need for more upgrading facilities now and well into the future, a cogeneration plant, a gasification plant, and a renewable diesel plant.

Our Competitive Edge

Saskatchewan has the ideal location for such an Integrated Energy Complex at Belle Plaine, located mid-way between two major urban centres – Regina and Moose Jaw. The infrastructure to support such an undertaking is already in place:

- direct access to the TransCanada #1 Highway;
- locally available professional and trades labour pools as well as housing at Regina and Moose Jaw;
- two existing large industrial energy sinks – Yara's nitrogen fertilizer plant and the Mosaic solution potash mine;
- adjacent to the Canadian Pacific and Canadian National railways;
- nearby water source at Buffalo Pound Lake;
- substantial natural gas and electrical supply on site;
- adjacent to the Plains Midstream Canada pipeline;
- Enbridge's oil pipeline is within 15 kilometres; and
- TransCanada's Keystone pipeline runs through Belle Plaine.

Real Opportunities – Right Now

With approximately 600 million barrels of remaining recoverable heavy oil reserves in Saskatchewan and exciting new oil sands opportunities in northwestern Saskatchewan (coupled with expected future production increases from Alberta's oil sands), a strong opportunity has been opened up for the development of new heavy oil/bitumen upgrading capacity, and the integrated energy complex. Saskatchewan is determined to capitalize on this opportunity.

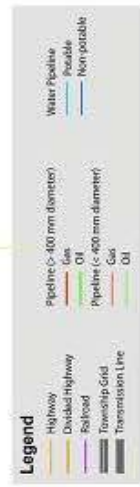
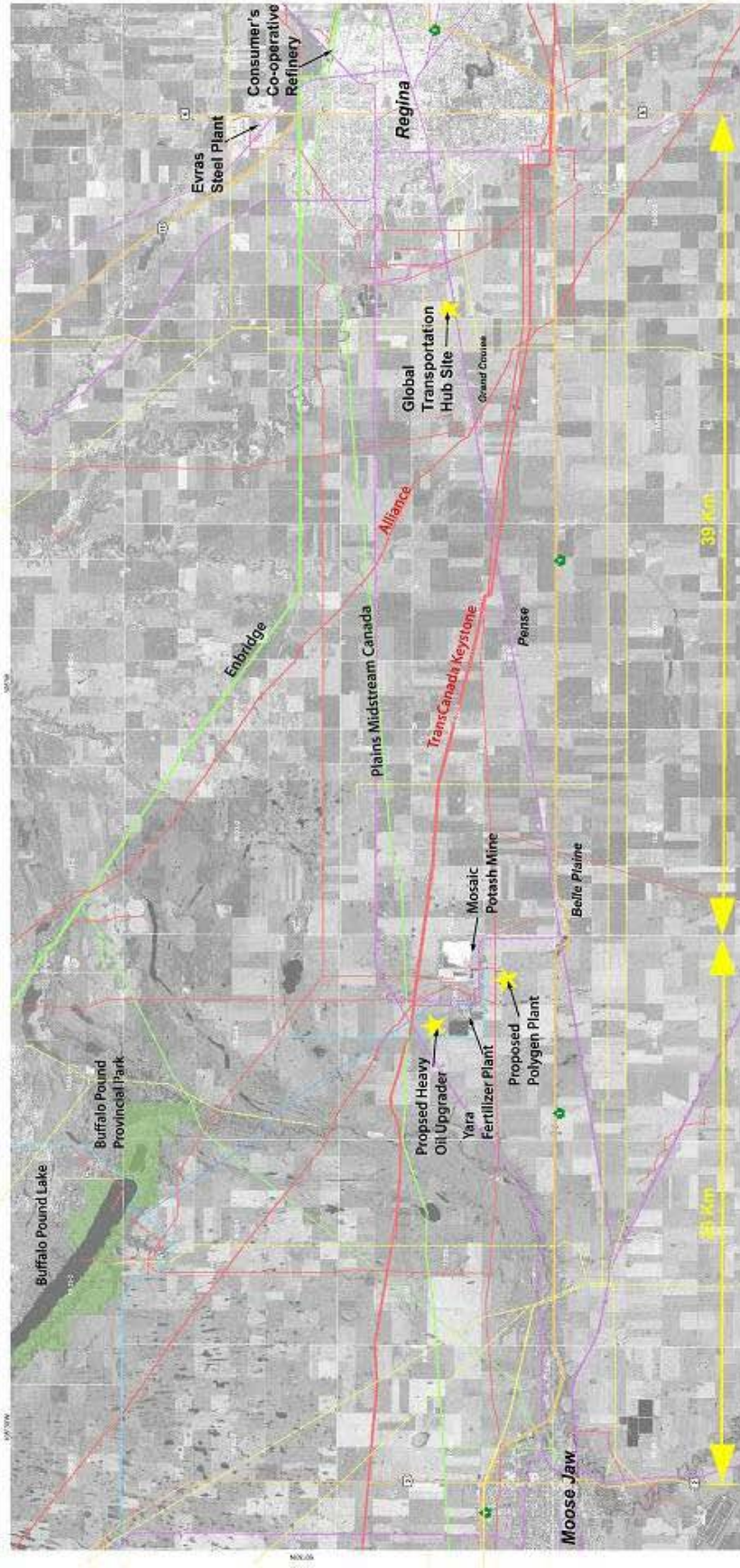
Want to know more? Contact:

Rick Musleh

Sector Manager, Energy
Enterprise Saskatchewan
300 – 2103 – 11th Avenue
Regina SK S4P 3Z8
Phone: (306) 787-0972
Fax: (306) 787-3989
E-mail: rick.musleh@enterprisesask.ca



↑
E



Regina to Moose Jaw Corridor Infrastructure Map



Disclaimer: The information in this document is accurate as of January 2011; however, the Government of Saskatchewan accepts no liability for any actions taken as a result of the information contained herein.